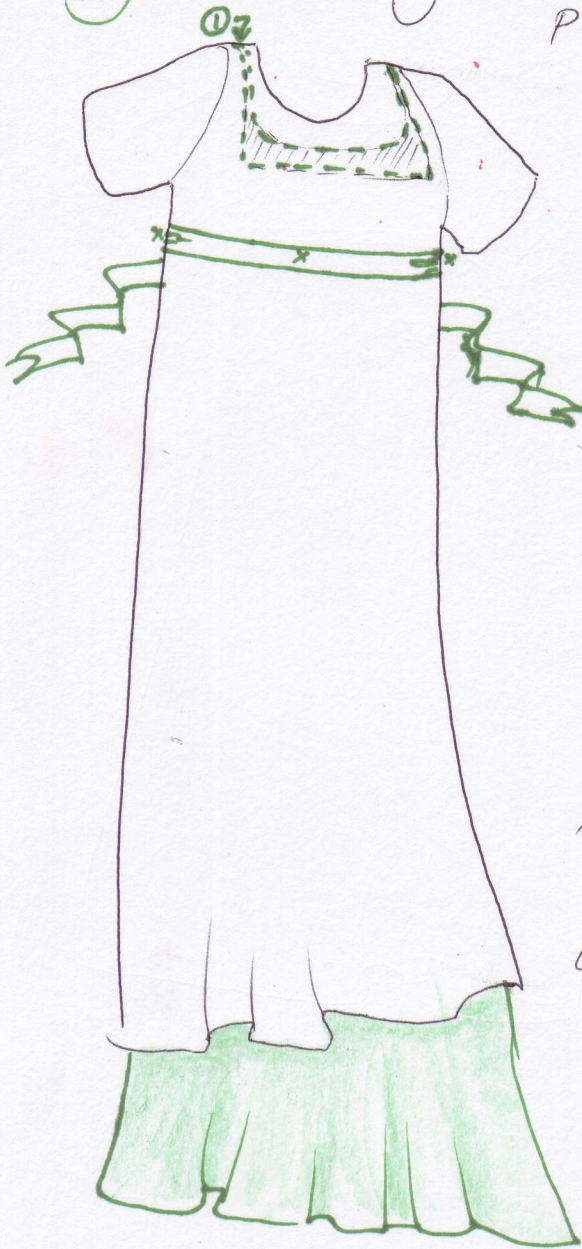


Easy - pre-existing summer dress, solid pastel or small traditional print. Lots of volume, back buttoned or pull-over.



Step 1: Trim neckline & back line to suit. Add a fine lace to cover "rough" edges.

Step 2: tack stitch a ribbon @ empire waist (under breasts and level across back. tack in front and at sides to insure it doesn't drop.

Step 3: Add a longer-solid coordinating skirt beneath.

Recommendation: Lace @ neck, Ribbon @ waist & underskirt are matched - or white/ivory.

- Easy to do.

Stephanie Johannesen - Oregon Regency Society

<http://www.oregonregencysociety.com>

ORRegency@msn.com